

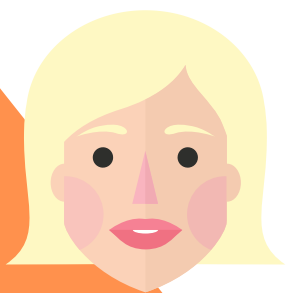
COURSE PROSPECTUS: DENTAL RADIOGRAPHY

EVERYTHING YOU NEED TO KNOW

**THE DENTAL SCHOOL, DELIVERING THE VERY
BEST TRAINING EVERY TIME**

DENTAL RADIOGRAPHY

WHO WILL BE MY COURSE TUTOR?



Lauren began her career in 2010 and has worked in General Practice as well as specialist practices. Lauren is qualified in

Radiography, Orthodontics and is able to teach a range of dental courses. Any student under Lauren's guidance will do well!

HOW LONG DOES THE COURSE LAST?

The course will last for a maximum of 9 months. As this course is a Post Registration Course, there is an expectation upon the learner to drive their own progress.

While there are Tutors and Assessors to support you each and every step of the way, you will need to be motivated to complete your course.

THE DENTAL SCHOOL

The Dental School was founded in 2019.

We truly believe that our team is perfectly positioned to deliver the very best learning experience for you.

We are focused on enabling you to achieve your very best while studying with us, by ensuring each learner has a clear plan of activity, set time for Tutor 121's and clear milestones to support you to stay on track.

We are committed to ensuring that you and everyone of our learners succeed.

WHO CAN STUDY?

The course is designed for Qualified Dental Nurses that hold a GDC registration. If you are not already qualified and in possession of a GDC number, we will not be able to enrol you on to the course.

HOW IS THE COURSE BE DELIVERED?

The course is delivered using a mixture on online materials and video sessions. This ensures that each and every learner's abilities are catered to.

Additional support can be offered if ever a learner feels that this would be beneficial.

DENTAL RADIOGRAPHY

FEES

The Dental School has completed extensive research to ensure that we are competitive.

Below is a breakdown of the costs associated with this course:

Course Fee: £695.00 +VAT

Exam Fee: £195.00

All course material is included in the fee.

KEY ATTRIBUTES

We have high expectations at The Dental School. We have equally high expectations of our learners too. While studying for your qualification, we expect to see the following:

1. Dedication to your studies
2. Meet deadlines set
3. Maintain open and honest communication with your Tutor

While there are Tutors and Assessors to support you each and every step of the way, you will need to be motivated to complete your course.

WHAT WILL BE COVERED?

The course is accredited by the NEBDN. Throughout the duration of the course, you will cover the following topics:

- Maintaining Good Clinical Practice.
- Radiation Physics
- Radiation Protection
- Apparatus and Equipment
- Films and Processing
- Digital Imaging
- Principles of Imaging
- Film Handling
- Digital Imaging – Practical Instruction.
- Intra Oral Techniques
- Extra Oral Techniques
- Quality Assurance
- Care of Patients
- Principles and Practice of Interpretations
- Fundamentals of Radiological Anatomy
- Identification of Common Dental Pathology.

During the course you will complete Records of Competence (RoC) split in to 3 parts. All three parts must be completed before you are eligible to sit your exam.

Part 1 - Practical Competence Sheets (PCAS)

To provide evidence of your involvement in at least 50 radiographs

Part 2 - Extended Case Studies on 3 different patients

Part 3 - The content of the supplementary outcomes is reviewed regularly by NEBDN but currently include: Oblique lateral mandible radiographs, Bisected angle periapical radiographs, Lateral cephalometric radiographs, a copy of the dental practice Local Rules



WWW.THEDENTALSCHOOL.ORG



07397 573730



INFO@THEDENTALSCHOOL.ORG