

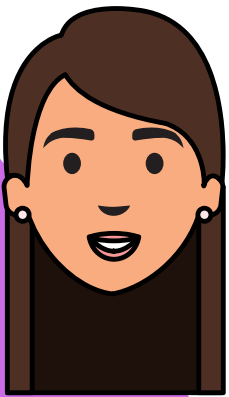
# COURSE PROSPECTUS: NATIONAL DIPLOMA

EVERYTHING YOU NEED TO KNOW

**BUILDING A GREAT PRACTICE, ONE PERSON AT A  
TIME**

# DENTAL DIPLOMA

## WHO WILL BE MY COURSE TUTOR?



We have a number of tutors here at The Dental School, all of which are Qualified Dental Nurses, Qualified Teaching Professionals and

who are more than capable of supporting you to complete your course and register with the GDC.

## HOW LONG DOES THE COURSE LAST?

The course will last for a maximum of 18 months. Typically our learners complete the course in 12 - 18 months, it just depends upon how dedicated you are and how good you are at meeting deadlines!

## THE DENTAL SCHOOL

The Dental School was founded in 2019.

We truly believe that our team is perfectly positioned to deliver the very best learning experience for you.

We are focused on enabling you to achieve your very best while studying with us, by ensuring each learner has a clear plan of activity, set time for Tutor 121's and clear milestones to support you to stay on track.

We are committed to ensuring that you and everyone of our learners succeed.

## WHO CAN STUDY?

There are no entry requirements for this course. Although it is recommended that you have a good grasp of English and Maths. All learners are required to complete a Maths and English questionnaire upon enrolment. This enables your tutor to tailor their learning to you

## HOW IS THE COURSE BE DELIVERED?

The course is delivered using a mixture of online materials and video sessions. This ensures that each and every learner's abilities are catered to.

Additional support can be offered if ever a learner feels that this would be beneficial.

# DENTAL DIPLOMA

## WHAT WILL BE COVERED?

The course is accredited by the NEBDN. Throughout the duration of the course, you will cover a variety of topics, such as:

- Work within regulatory requirements in relation to the role of a dental nurse.
- Promote oral health for individuals.
- Provide support during the assessment of individuals oral health.
- Provide support during the prevention and control of periodontal disease, caries and the restoration of cavities.
- Dental anatomy and assessment of oral health.
- Principles and techniques of dental radiography.
- Principles of managing oral disease and dental procedures.
- Understand ethics and professionalism in dental nursing.
- First aid essentials.

During the course you will complete Records of Experience (RoE). There are 2 types:

**Practical Experience Records (PERs)** These are assessments of you assisting in a practical setting

**Supplementary Outcomes** - These are tasks that are set to test your knowledge of the topic.

All RoE must be completed and marked by your tutor before you can sit the exam.

To complete the course, you will also sit 2 exams.

### Written

This will consist of Single answer questions, multiple choice questions and Extended Matching Questions, completed online.

### Practical (OSCE)

This is to test your skills in a practical environment. Almost like a demonstration.

# DENTAL DIPLOMA

## FEES

The Dental School has completed extensive research to ensure that we are competitive.

Below is a breakdown of the costs associated with this course:

**Course Fee: £1850.00 +VAT**, This includes the exam fee

Payment plans are available, interest free

All course material is included in the fee. Digital textbooks are provided, paper copies are not provided

## KEY ATTRIBUTES

We have high expectations at The Dental School. We have equally high expectations of our learners too. While studying for your qualification, we expect to see the following:

1. Dedication to your studies
2. Meet deadlines set
3. Maintain open and honest communication with your Tutor

While there are Tutors and Assessors to support you each and every step of the way, you will need to be motivated to complete your course.



**WWW.THEDENTALSCHOOL.ORG**



**07397 573730**



**INFO@THEDENTALSCHOOL.ORG**