

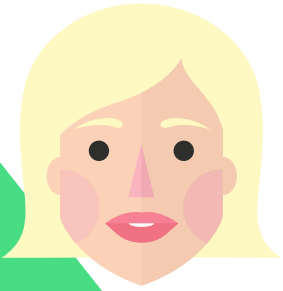
COURSE PROSPECTUS: ORTHODONTICS

EVERYTHING YOU NEED TO KNOW

**BUILDING A GREAT PRACTICE, ONE PERSON AT A
TIME**

ORTHODONTICS

WHO WILL BE MY COURSE TUTOR?



Lauren began her career in 2010 and has worked in General Practice as well as specialist practices. Lauren is qualified in

Radiography, Orthodontics and is able to teach a range of dental courses. Any student under Lauren's guidance will do well!

HOW LONG DOES THE COURSE LAST?

The course will last for 6 months. As this course is a Post Registration Course, there is an expectation upon the learner to drive their own progress.

While there are Tutors and Assessors to support you each and every step of the way, you will need to be motivated to complete your course.

THE DENTAL SCHOOL

The Dental School was founded in 2019.

We truly believe that our team is perfectly positioned to deliver the very best learning experience for you.

We are focused on enabling you to achieve your very best while studying with us, by ensuring each learner has a clear plan of activity, set time for Tutor 121's and clear milestones to support you to stay on track.

We are committed to ensuring that you and everyone of our learners succeed.

WHO CAN STUDY?

The course is designed for Qualified Dental Nurses that hold a GDC registration. If you are not already qualified and in possession of a GDC number, we will not be able to enrol you on to the course.

HOW IS THE COURSE BE DELIVERED?

The course is delivered using a mixture on online materials and video sessions. This ensures that each and every learner's abilities are catered to.

Additional support can be offered if ever a learner feels that this would be beneficial.

ORTHODONTIC

WHAT WILL BE COVERED?

The course is accredited by the NEBDN.

Throughout the duration of the course, you will cover 12 different modules::

- Cross Infection Control in Orthodontics.
- Classification of Malocclusion.
- Legal and Ethical Issues.
- Anatomical Structure Relative to Orthodontics.
- Orthodontic Treatment.
- Record Keeping.
- Orthodontic Appliances.
- Oral Health in Relation to the Care & Management of Appliances.
- Interdisciplinary Care.
- Laboratory Skills.
- Stock Control.
- Indices & Clinical Governance..

During the course you will complete Records of Competence (RoC) split in to 3 parts. All three parts must be completed before you are eligible to sit your exam.

Part 1 - PCAS Evidence sheets to be completed in surgery regarding your involvement with patients. You should be able to demonstrate the following:

- 3x banding, bonding and adjustment of fixed appliances
- 3x fitting and adjustment of removable appliances
- 3x bite registration, fitting and adjustment of functional appliances
- 2x bonded and removable retainers
- 2x study models/functional appliance impression assistance (inc bite reg)

Part 2 - Case Studies. These are case studies on 2 different patients, of between 1800 and 2200 words each.

Part 3 - Supplementary Outcomes. The content of the supplementary outcomes is reviewed regularly by NEBDN but currently include:

- Clinical photographs/slides, cephalometric tracing, digitisation & measurement.
- Assisting in the taking of impressions and the casting of study models and finally assisting in the fitting and adjustment of appliances

ORTHODONTIC

S FEES

The Dental School has completed extensive research to ensure that we are competitive.

Below is a breakdown of the costs associated with this course:

Course Fee: £695.00 +VAT

Exam Fee: £195.00

Text books are not provided.

KEY ATTRIBUTES

We have high expectations at The Dental School. We have equally high expectations of our learners too. While studying for your qualification, we expect to see the following:

1. Dedication to your studies
2. Meet deadlines set
3. Maintain open and honest communication with your Tutor

While there are Tutors and Assessors to support you each and every step of the way, you will need to be motivated to complete your course.



WWW.THEDENTALSCHOOL.ORG



07397 573730



INFO@THEDENTALSCHOOL.ORG